

SuperSoft - ESD Workplace Mats

Polyurethane - extremely elastic and anti-fatigue

ESD DIN EN61340-5-1

$R_p 10^5-10^7 \Omega$, $R_G 10^5-10^7 \Omega$

ESD Walking-Test
DIN EN1815

Anti-fatigue and ergonomic



SuperSoft - ESD Workplace Mats

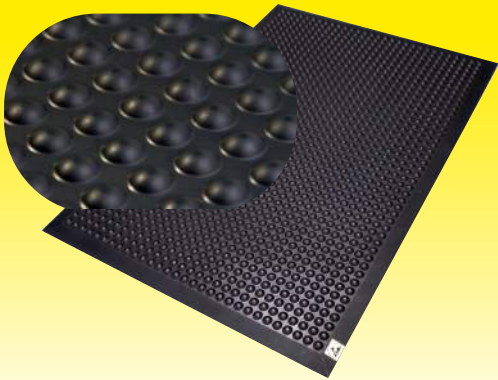
Polyurethane Soft Antistatic Foam

Stand ESD

Bubble design

Highest standing comfort

Especially for standing work positions

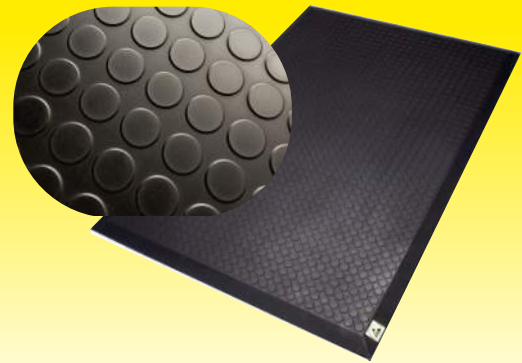


Disc ESD

Smooth design

High comfort

Optimum for workplaces with turning and walking movements
Easy access for material vehicles



All our ESD mats have a positive anti-fatigue effect on employees with standing workpositions. Ergonomic benefits mean increased productivity. For all employees with standing, turning and walking work positions in ESD areas. Especially designed for assembly, distribution and workbench areas in automotive, electronic, metal working and clean room industries.

Features:

Super elastic and durable antistatic PU foam.
ESD Rp $10^5 - 10^7 \Omega$, Rg $10^5 - 10^7 \Omega$.
Molded beveled edges on all sides.
Highest standing comfort.
Anti-slip, durable and strong.
Retains permanent shape.

Product specifications:

Thickness: 12 mm -14 mm
(depending on design)
Weight: 5,5 kg/m²
Colour: Black
Surface: Bubble or Disc

Examples standard sizes:

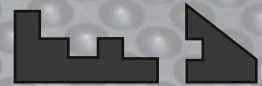
66 x 96 cm, 66 x 141 cm, 66 x 186 cm, 66 x 231 cm, 66 x 276 cm, 66 x 321 cm, 66 x 366 cm,
96 x 66 cm, 96 x 96 cm, 96 x 126 cm, 96 x 156 cm, 96 x 186 cm, 96 x 186 cm, 96 x 246 cm, 96 x 306 cm

Types:

Antistatic/ESD - DIN EN 61340-5-1
Fireretardant - DIN 4102/B1
Combination B1 + ESD

Shapes:

Any size and any shape possible
Just measure up!



Service:

Local measuring, delivery,
installation and fitting

Guarantee: 5 years

